



2009-2010 GMT Quarterly Report for District (or Undistricted) **District 333 E**

GMT: **Shinobu Goto**

Location: **JAPAN**

GMT CA: **5**

CLUBS

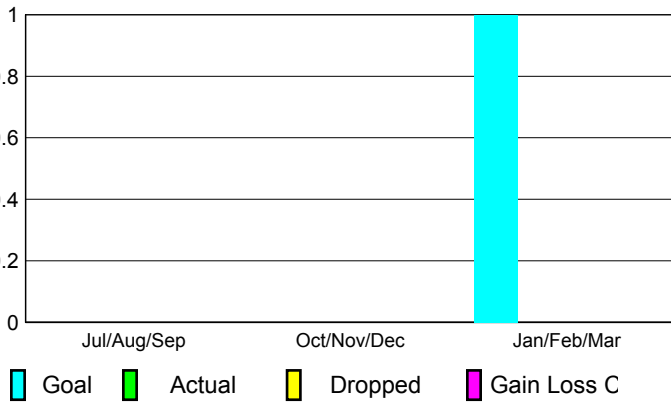
| |
|---------------------|
| Club Results |
| 2009-2010 |

| |
|------------------|
| Clubs |
| 2008-2009 |

| Month | New Club | Actual New | Actual Dropped | Gain/Loss of | Gain/Loss of |
|---------------|----------|------------|----------------|--------------|--------------|
| | Goal | Clubs | Clubs | Clubs | Clubs |
| Jul/Aug/Sep | 0 | 0 | 0 | 0 | 0 |
| Oct/Nov/Dec | 0 | 0 | 0 | 0 | 0 |
| Jan/Feb/Mar | 1 | 0 | 0 | 0 | 1 |
| Totals | 1 | 0 | 0 | 0 | 1 |

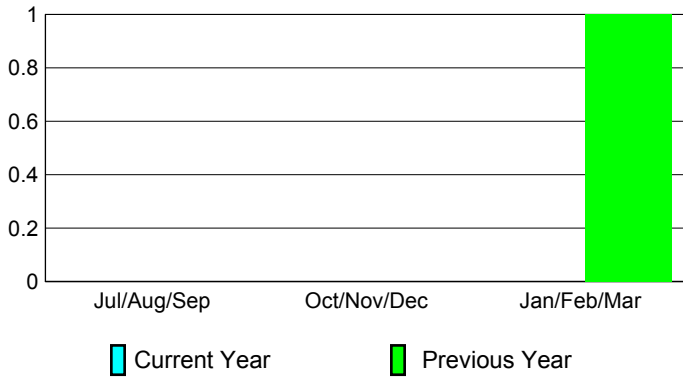
Club Results 2009-2010

Goal, New, Dropped, Gain/Loss



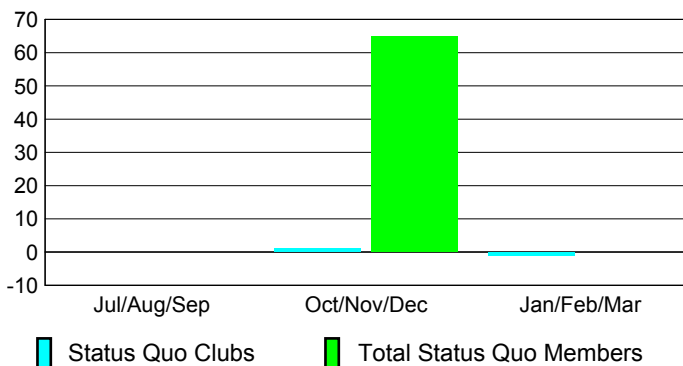
Comparison of Club Gain/Loss

Current Year Compared to the Previous Year



YTD Status Quo Clubs 2009-2010

Status Quo Clubs Compared to Status Quo Members



MEMBERSHIP

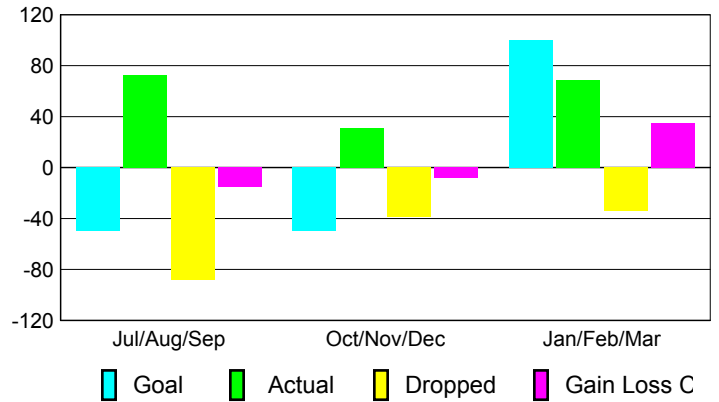
| |
|---------------------------|
| Membership Results |
| 2009-2010 |

| |
|-------------------|
| Membership |
| 2008-2009 |

| Month | Net Memb | Actual New | Actual Dropped | Gain/Loss of | Gain/Loss of |
|---------------|----------|------------|----------------|--------------|--------------|
| | Goal | Memb | Memb | Memb | Memb |
| Jul/Aug/Sep | -50 | 73 | -88 | -15 | -10 |
| Oct/Nov/Dec | -50 | 31 | -39 | -8 | -11 |
| Jan/Feb/Mar | 100 | 69 | -34 | 35 | 13 |
| Totals | 0 | 173 | -161 | 12 | -8 |

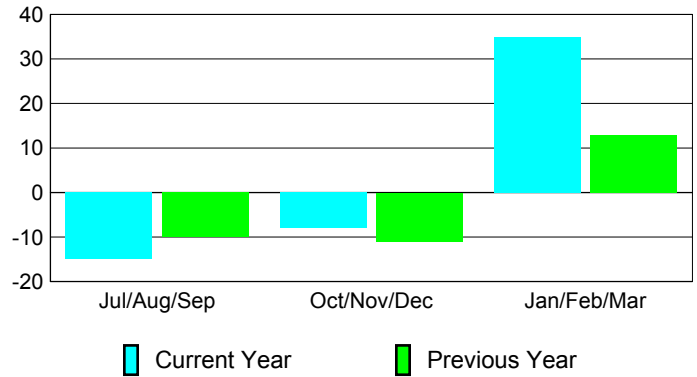
Membership Results 2009-2010

Goal, New, Dropped, Gain/Loss



Comparison of Membership Gain/Loss

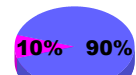
Current Year Compared to the Previous Year



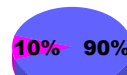
Gender Comparison 2009-2010



Jul/Aug/Sep



Oct/Nov/Dec



Jan/Feb/Mar

Male

Female